

# **Scrutiny for Policies, Children and Families Committee (Advisory Board meetings only from 19 January 2022 onwards)**

**Tuesday 25 January 2022**

**10.00 am Virtual Meeting via Microsoft Teams**



## **SUPPLEMENT TO THE AGENDA**

To: The Members of the Scrutiny for Policies, Children and Families Committee (Advisory Board meetings only from 19 January 2022 onwards)

### **Agenda Item 6 - Partnership Children & Young People's Plan 2022 - 2025**

Please find enclosed the updated presentation given at the meeting (Pages 3 – 8).

Published on 24 January 2022

Democratic Service Team, County Hall, Taunton, TA1 4DY

This page is intentionally left blank

# SOMERSET CHILDREN AND YOUNG PEOPLE'S PLAN 2022-25

SCC Children and Families Scrutiny

25 January 2022

# Children & Young People's Plan 2022-25

---

- ❑ Three priorities:
  1. Keeping children and young people safe
  2. Supporting physical and emotional health and resilience
  3. Enabling young people to learn and thrive
- ❑ Safeguarding aspects will all be covered under priority 1 through existing strategies and governance structures
- ❑ The plan will co-ordinate universal and targeted activity from existing strategies and plans, with specified accountability
- ❑ Reporting from **Q1 2022/23**

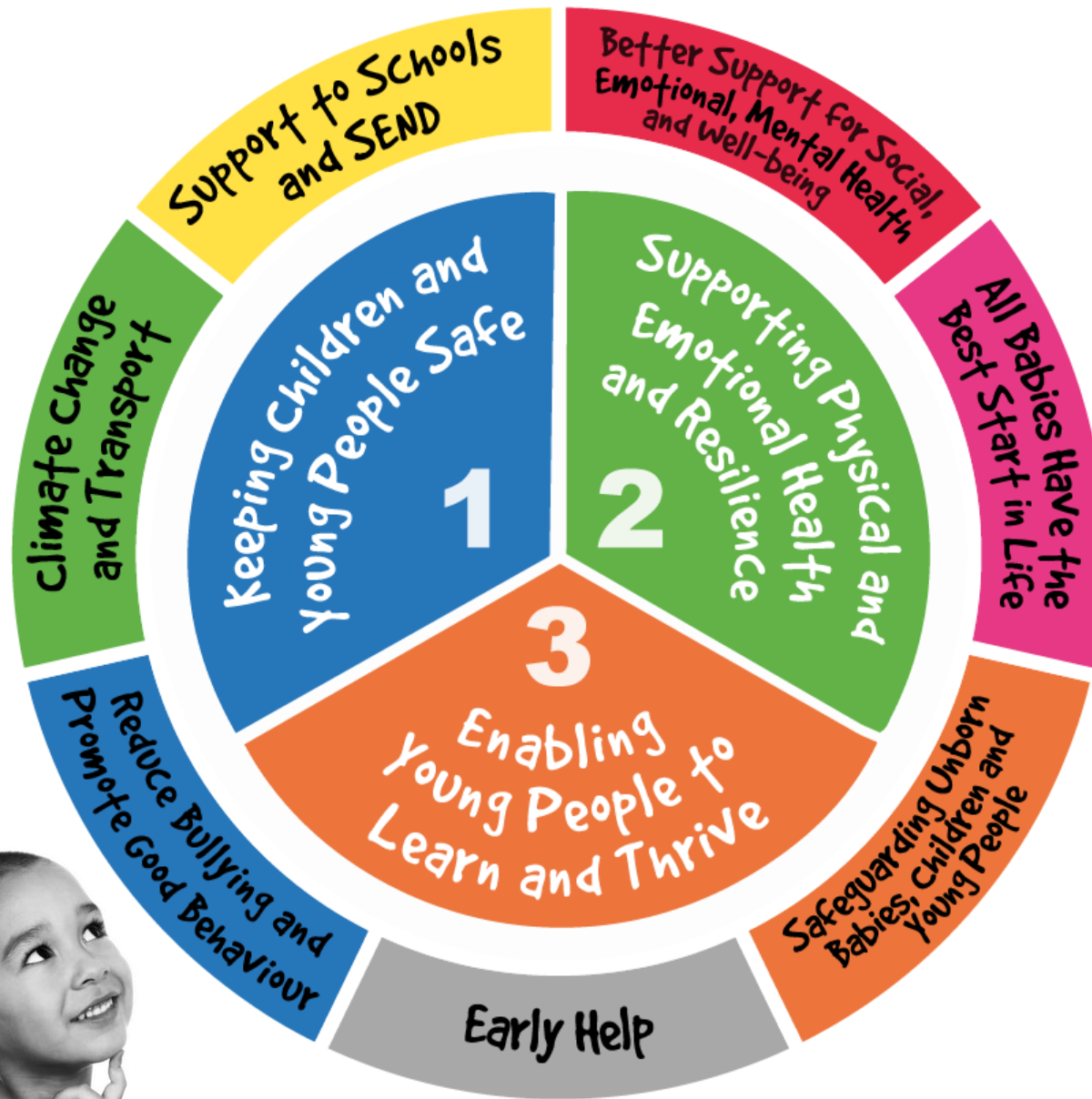
## Our Vision:

Our vision is that Somerset's unborn babies, children and young people grow up in a child friendly county that supports them to be happy, healthy and prepared for adulthood.

We will keep our unborn babies, children and young people safe and help them to thrive and to be ambitious – building a county that encourages equality and diversity, protects that environment and strives for progress on climate change for future generations. We want to increase social mobility that, in turn, will build a more prosperous county.

We aim to improve outcomes for all our children whilst recognising the need for outcomes to improve faster for vulnerable unborn babies, children and young people.

We are a county that listens to and supports our children, young people and their families to share their lived experiences in order to make the right decisions on service provision with them.



## Somerset Safeguarding Children Partnership:

All unborn babies, children and young people in Somerset are the responsibility of three statutory safeguarding partners – Somerset County Council, Somerset Clinical Commissioning Group and Avon and Somerset Constabulary – as well as relevant agencies as set out in 'Working Together to Safeguard Children' (2018). This arrangement is called the Somerset Safeguarding Children Partnership (SSCP) who have overall responsibility for the Children and Young People's Plan.

## Principles that underpin our vision:

Using robust data and regular progress reports we will ask the question 'How did this make a difference?' We will listen and respond to what children and young people and their families tell us, as part of our accountability to them.

Taking a whole family approach we will support our families to be strong, providing adults and children with the tools they need to work together to support each other's goals and achieve long-term change and stability.

# Universal Children and Young People's plan to reflect three priorities:

## 1 Keeping children and young people safe

- Somerset Safeguarding Children Partnership
  - Neglect
  - Child Exploitation
  - Emotional Health and Well-Being
  - Reducing Bullying and Promoting Good Behaviour
- Safer Somerset Partnership
  - Domestic Abuse Board
  - Violence Reduction
  - Police & Crime Plan

## 2 Supporting physical and emotional health and resilience

- Health Safeguarding Children Partnership
- CYPMH & EWB Focus Group
- CCG - Women and Children's Health
- Early Help Board
- Public Health

## 3 Enabling young people to learn and thrive

- Education Partnership
- Universal Education
- SEND/Inclusion Board / WSoA
- Early Help Board
- Transport Board

Page 6

Cross-cutting

Corporate Parenting Board

Youth Justice Board

Climate

CYPP Universal Priority	CYPP Targeted Priority(s)	CYPP universal reporting	CYPP safeguarding reporting	Children's Transformation Programme	Strategic Links
<b>1: Keeping children and young people safe</b>	<ul style="list-style-type: none"> <li>▪ Safeguarding Unborn Babies, Children and Young People</li> <li>▪ Reducing Bullying and Promoting Good Behaviour</li> </ul>		<ul style="list-style-type: none"> <li>• Somerset Safeguarding Children Partnership (&amp; subgroups)</li> <li>• Safer Somerset Partnership</li> <li>• Youth Justice Board</li> </ul>	<ul style="list-style-type: none"> <li>• Early Help</li> <li>• Family Solutions Somerset</li> <li>• Building Local Capacity &amp; Sufficiency</li> <li>• (Joint Commissioning)</li> </ul>	<ul style="list-style-type: none"> <li>• Somerset Neglect Strategy</li> <li>• Somerset Corporate Parenting Strategy</li> <li>• Somerset Child Exploitation Strategy</li> <li>• NHS Long Term Plan</li> <li>• Somerset Early Help Strategy</li> <li>• Domestic Abuse Strategy</li> <li>• Somerset Violence Reduction Strategy</li> </ul>
<b>2: Supporting physical and emotional health and resilience</b>	<ul style="list-style-type: none"> <li>▪ Better Support for Social, Emotional, Mental Health and Well Being</li> <li>▪ All Babies Have the Best Start in Life</li> <li>▪ Early Help</li> <li>▪ Climate Change &amp; Transport</li> </ul>	<ul style="list-style-type: none"> <li>• CYPMH &amp; EWB Focus Group</li> <li>• CCG - Women and Children's Health</li> <li>• Corporate Parent Board</li> <li>• Early Help Board</li> <li>• Public Health</li> <li>• Climate</li> </ul>		<ul style="list-style-type: none"> <li>• Early Help</li> <li>• (Joint Commissioning)</li> </ul>	<ul style="list-style-type: none"> <li>• NHS CYPMHS Local Transformation Plan</li> <li>• CYP Local Transformation Plan</li> <li>• Somerset SEND WSoA / SEND Strategy</li> <li>• Maternity Transformation Plan</li> <li>• Somerset Early Help Strategy</li> <li>• Somerset Climate Emergency Strategy</li> </ul>
<b>3: Enabling young people to learn and thrive</b>	<ul style="list-style-type: none"> <li>▪ Universal Education</li> <li>▪ Support to schools and SEND</li> <li>▪ Reducing Bullying and Promoting Good Behaviour</li> <li>▪ Early Help</li> <li>▪ Climate Change &amp; Transport</li> </ul>	<ul style="list-style-type: none"> <li>• Education Partnership</li> <li>• SEND Improvement Board</li> <li>• Early Help Board</li> <li>• Climate</li> <li>• Transport</li> </ul>		<ul style="list-style-type: none"> <li>• SEND Improvement</li> <li>• Education Partnership</li> <li>• (Joint Commissioning)</li> </ul>	<ul style="list-style-type: none"> <li>• Somerset Education Strategy</li> <li>• Somerset SEND WSoA / SEND Strategy</li> <li>• Somerset Early Help Strategy</li> <li>• Somerset Climate Emergency Strategy</li> <li>• Bus Service Improvement Plan (BSIP) (scheme is legally binding)</li> </ul>

This page is intentionally left blank